

B \flat BASS & CONTRA CLARINETS

July 2002

ADVANCED STUDIES FROM THE WORKS OF JULIUS WEISSENBORN

(Adapted by William E. Rhodes/Southern Music Co.)

NOTE: NO REPEATS ARE TO BE TAKEN IN ANY EXERCISE.

YEAR A		
Page 7, #11	<i>Andante</i>	<i>Andante</i> ♩ = 72-80
	Play from the beginning through measure 4 of line 11 (to the <i>marcato</i>). Skip the <i>Fine</i> ending.	<i>Allegro</i> ♩ = 152-176
Page 2, #3	<i>Allegro moderato</i>	<i>Tranquillo</i> ♩ = 92-100
	Play all.	♩ = 120

YEAR B		
Page 26, #33	<i>Intrada/Andante</i>	♩ = 76-80
	Play from the beginning through measure 3 of line 6.	
Page 3, #5	<i>Allegro assai</i>	♩ = 144-168
	Play from the beginning to the fermata on line 9.	
	Known Errata:	
	The last two eighth notes of line 3 should be tongued.	

YEAR C		
Page 16, #21	<i>Allegretto</i>	♩ = 72
	Play from the beginning through measure 4 on line 9.	
Page 2, #4	<i>Allegro furioso</i>	♩ = 120
	Play all.	

YEAR D		
Page 5, #7	<i>Scherzo</i>	♩ = 92-108
	Play all.	
Page 6, #10	<i>Allegro moderato</i>	♩ = 88-96
	Play all.	

YEAR E		
Page 5, #8	<i>Marcia - risoluto</i>	♩ = 112-126
	Play all.	
Page 1, #2	<i>Allegro - risoluto</i>	♩ = 60
	Play all.	
	Known Errata:	
	1. Line 3, measure 4, 3rd note G should be A.	
	2. Line 3, measure 5, 3rd note F should be E.	

ATSSB B^b Bass & Contra Clarinet Scales

All scales are to be played at a minimum of ♩ = 120

1. Concert G (written A) Major Scale



2. Concert C (written D) Major Scale



3. Concert F (written G) Major Scale



4. Concert B^b (written C) Major Scale



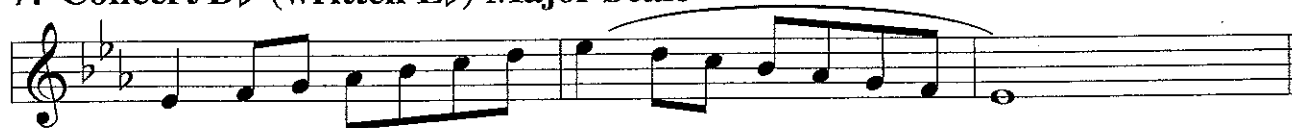
5. Concert E^b (written F) Major Scale



6. Concert A^b (written B^b) Major Scale



7. Concert D^b (written E^b) Major Scale



8. Chromatic Scale



Allegretto - risoluto

2. *f* *p* *f* *p*

B-256.

© Copyright 1973 by Southern Music Company, San Antonio, Texas 78292
International Copyright secured, Printed in U.S.A. All rights reserved

8. *poco f* *sf* *sf* *p dolce* *cresc.* *sf* *sf*

B-256